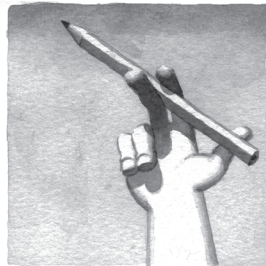
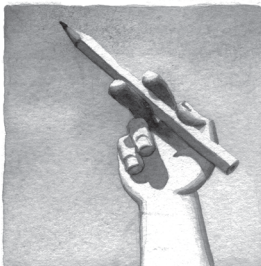
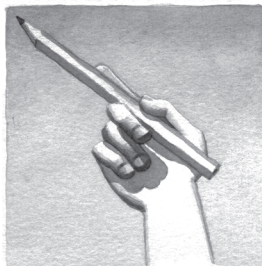
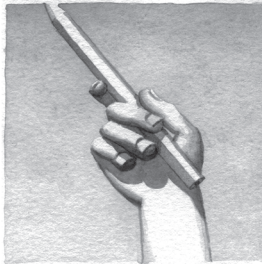
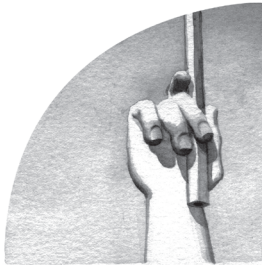
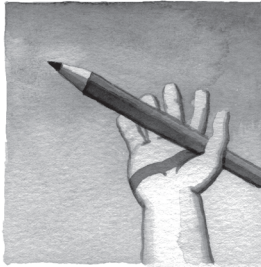
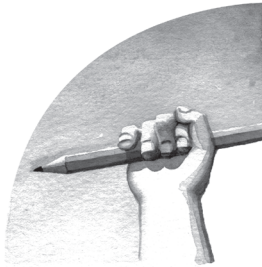


I USE THIS IMAGE AS MY
PROFILE PIC AT WORK.

IT'S FUNNY WHEN I LOOK BACK AT THESE OLD PAGES, WITH THEIR FOCUS
ON MINUTE DEPICTIONS OF PRECISE MOVEMENTS, BUT ALSO SCRAMBLED
PICTURES OF THOSE MOVEMENTS.



I DON'T WANT TO GET INTO SOME "OOH MY BODY
MUST HAVE KNOWN WHAT WAS HAPPENING TO IT
BEFORE I WAS CONSCIOUSLY AWARE" HOCUS
POCUS ... BUT IT'S WEIRD, YOU KNOW?



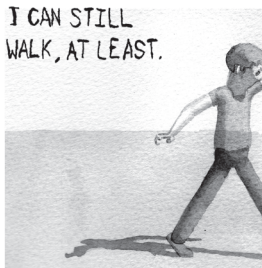
THIS IS CARTOONIST JOHN HICKLENTON. HE WAS DIAGNOSED WITH MS IN 2000.

IN A 2006 INTERVIEW RECORDED FOR THE DOCUMENTARY 'HERE'S JOHNNY', HE SAYS -

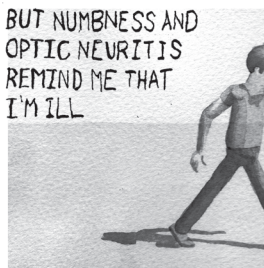


IT'S HARD TO WATCH THAT FILM. JOHNNY'S SYMPTOMS ARE WAY MORE ADVANCED THAN MINE.

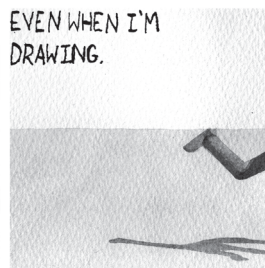
I CAN STILL WALK, AT LEAST.



BUT NUMBNESS AND OPTIC NEURITIS REMIND ME THAT I'M ILL



EVEN WHEN I'M DRAWING.



THE STUFF THAT I DO IS SORT OF AGGRESSIVE ART, I SUPPOSE. AND I THINK THAT ALL AGGRESSION IS COMING OUT OF FEAR.

SO I THINK I JUST TURNED MY FEAR INTO A WORKABLE TOOL.

I WAS DOING IT BEFORE, WHEN I WAS WELL, BUT NOW THOSE CHARACTERS ARE REPRESENTING A DIFFERENT MINDSET.

HE DESCRIBED HIS PARTNER CLAIRE AS "LIKE A SWORD, LIKE JOAN OF ARC"

I THINK HE SEES HIS MS AS A THIRD PARTY. HE SEES IT AS SOMETHING THAT HAS A WILL AND HAS INTENTION AND KNOWS WHAT IT'S DOING. HE SEES IT AS A DEMON REALLY, AND IT DOES SEEM TO BE THAT WAY.



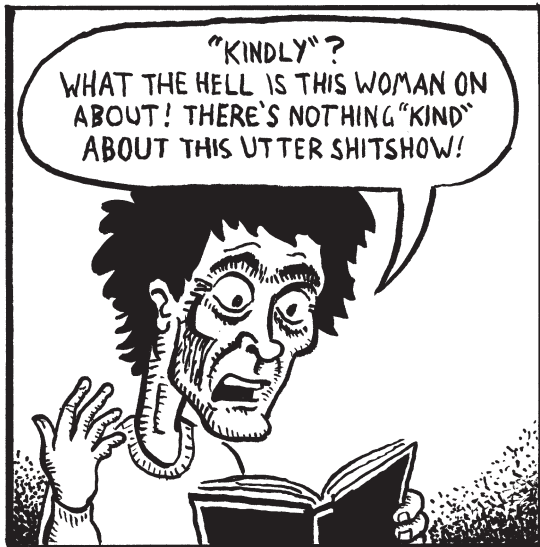
JOHNNY ENDED HIS LIFE AT THE DIGNITAS CLINIC IN SWITZERLAND ON MARCH 19, 2010, THE DAY AFTER MY 32ND BIRTHDAY. HE WAS 42, THE AGE I AM NOW.

THIS IS MUSICIAN AND COMPOSER
LINDSAY COOPER. SHE WAS
DIAGNOSED WITH MS IN 1987. ON
THE DAY BEFORE MY 16TH BIRTHDAY,
SHE WROTE IN HER DIARY-



Thursday 17th March 1994

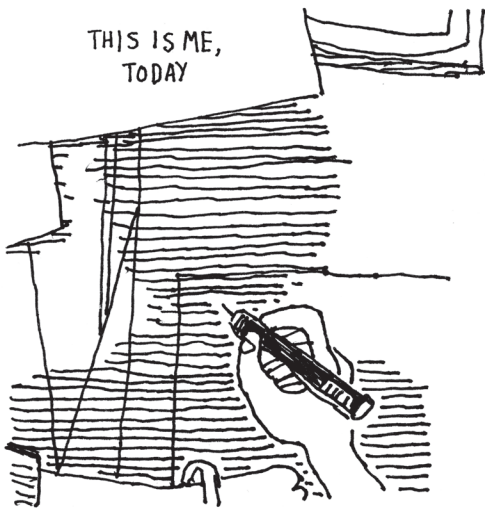
If I can feed myself properly,
if I can get some decent nights of deep sleep,
if I don't get anxious about work
this numbness + all the other symptoms
my body is kindly producing
to remind me to treat myself better
will clear up.



WHY START A WAR THAT YOU'VE ALREADY LOST?



THIS IS ME,
TODAY



THIS IS
AMAZING



IF SHE'S WITH ROBYN ARCHER THEN
THIS MUST BE A YEAR OR SO BEFORE
THE DIARIES I'VE READ



FINDING A PDF OF LINDSAY
COOPER'S ILLUSTRATED DIARY



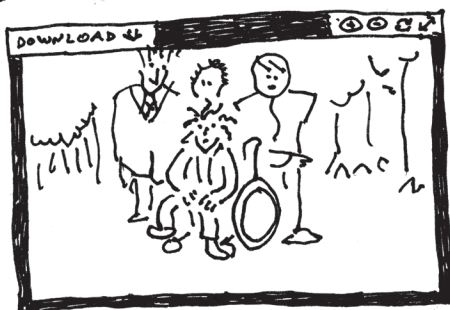
THE LANGUAGE IS MORE PLAYFUL
THAN IN THE PROSE DIARIES

IS "BRICKMOUTH"
HER MOTHER?



HER HAIR LOOKS QUITE
SHORT IN THESE

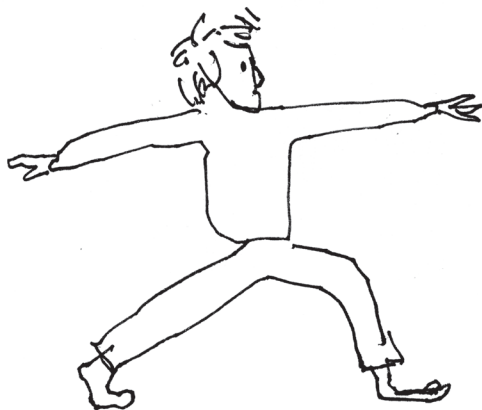
OH



SHE'S IN A WHEELCHAIR HERE



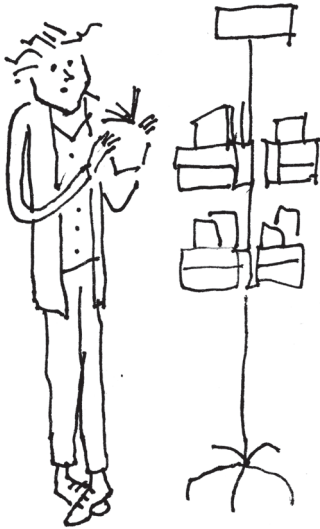
I THOUGHT SHE DIDN'T USE
ONE UNTIL A BIT LATER



ON THAT HOLIDAY SHE TOOK IN
1992 IT SOUNDED LIKE SHE WAS
GOING ON LONGER WALKS THAN I
COULD NOW. AND RUNNING!

Saturday 9th April 1994

A visit to the Hocus Pocus shop
in Covent Garden



Lazarus reminds us
that illness is 100%
emotional in cause



Tuesday 12th April 1994

Went to see Carola

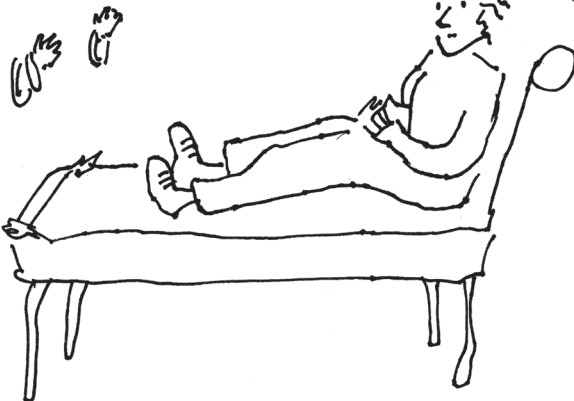
+ she suggested lying down

+ listening to what my body had to say.

I had thought that I should try welcoming my symptoms

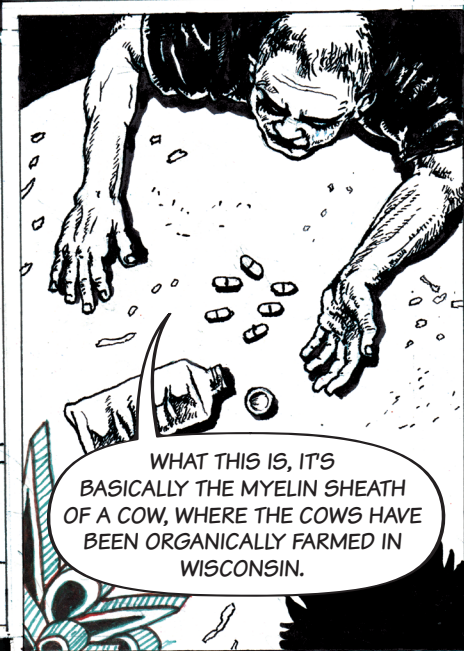
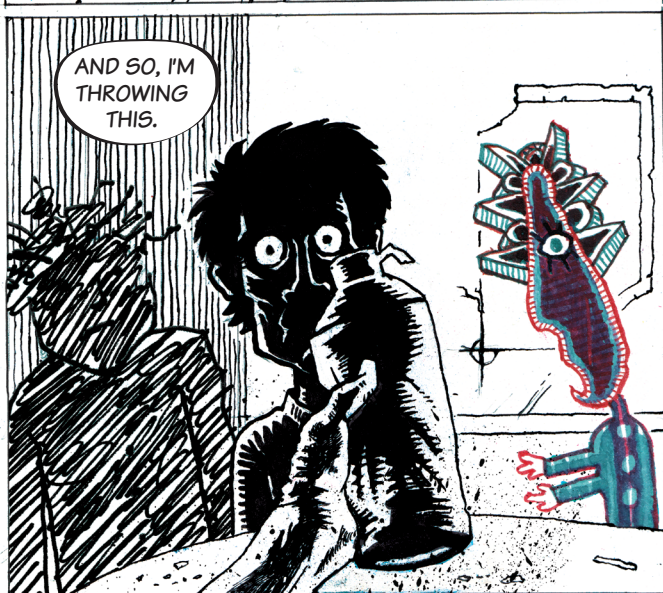
and that our bodies are always our allies

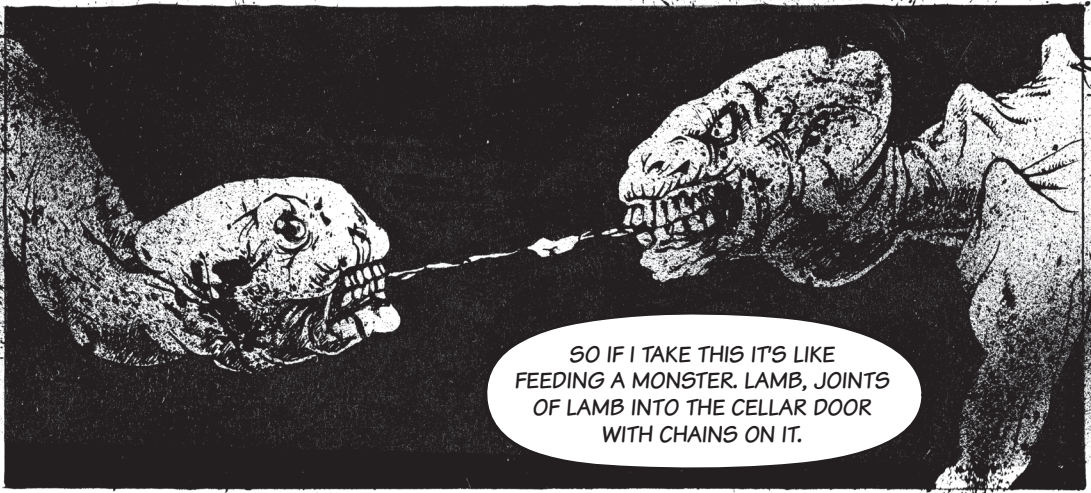
+ trying to teach us



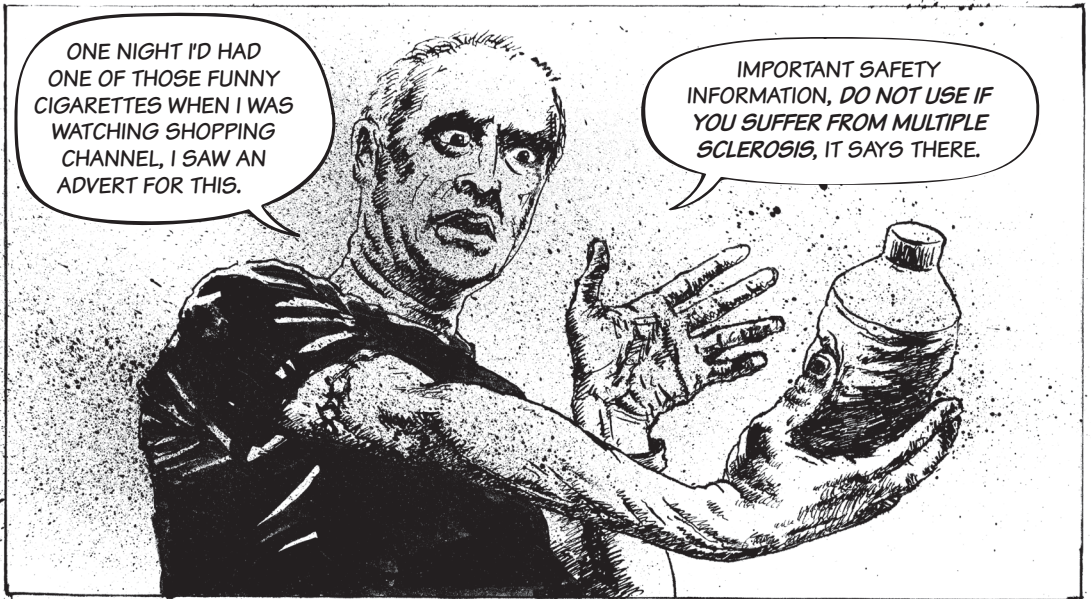
SO MAYBE I'M ADDICTED
TO IT, MAYBE I'LL LOVE HAVING MULTIPLE
SCLEROSIS WHEN MY SOUL CHOSE IT FOR
MY OWN WELL BEING. THANK YOU FOR
BEING SO BRAVE.





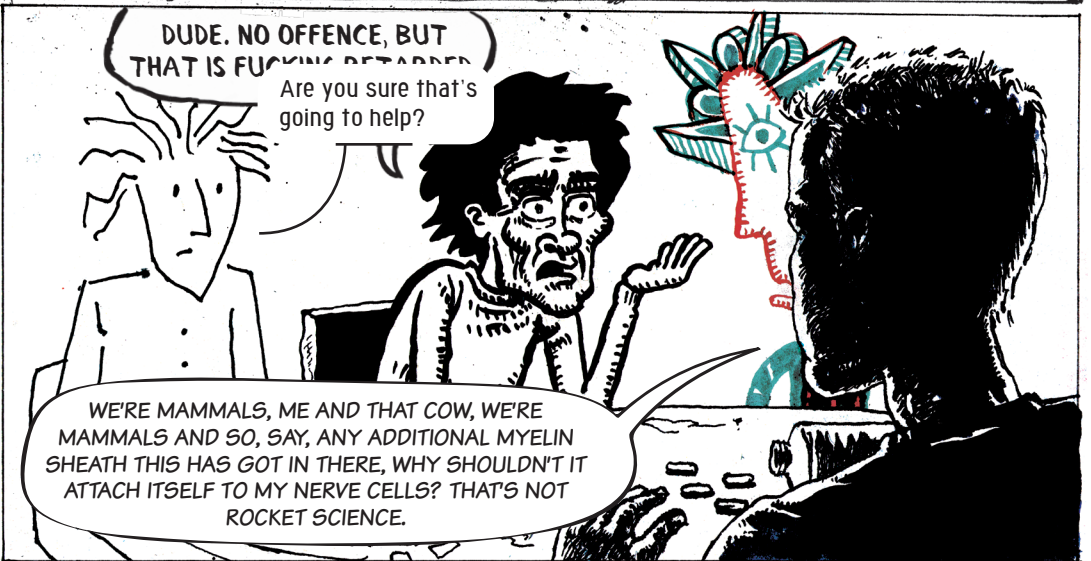


SO IF I TAKE THIS IT'S LIKE
FEEDING A MONSTER. LAMB, JOINTS
OF LAMB INTO THE CELLAR DOOR
WITH CHAINS ON IT.



ONE NIGHT I'D HAD
ONE OF THOSE FUNNY
CIGARETTES WHEN I WAS
WATCHING SHOPPING
CHANNEL, I SAW AN
ADVERT FOR THIS.

IMPORTANT SAFETY
INFORMATION, *DO NOT USE IF
YOU SUFFER FROM MULTIPLE
SCLEROSIS*, IT SAYS THERE.



DUDE. NO OFFENCE, BUT
THAT IS FUCKING RETARDED

Are you sure that's
going to help?

WE'RE MAMMALS, ME AND THAT COW, WE'RE
MAMMALS AND SO, SAY, ANY ADDITIONAL MYELIN
SHEATH THIS HAS GOT IN THERE, WHY SHOULDN'T IT
ATTACH ITSELF TO MY NERVE CELLS? THAT'S NOT
ROCKET SCIENCE.

THIS IS A SELF-DESTRUCTIVE
ACTIVITY THAT YOU
WOULDN'T BE UNDERTAKING IF
YOU DIDN'T MISGUIDEDLY THINK
OF YOURSELF AS A WARRIOR

THAT'S WHAT I
MEANT

WHAT CHOICE HAVE I GOT? I'D RATHER TRY
SOMETHING AND HAVE IT BACKFIRE THAN SIT
AND DO NOTHING

Can't you just accept that different things are
going to work for different people?

LIKE TREATING MS AS MY
SPECIAL FRIEND THAT GIVES
ME LIFE LESSONS?

It was different when we were alive.
What treatments have you had so
far?

UH, CLADRIBINE ... I HAD THAT A FEW MONTHS
AFTER I WAS DIAGNOSED. AND THE BIOTIN
TRIAL, WHICH JUST FINISHED RECENTLY

THE EXPERIMENTAL VITAMINS DIDN'T WORK

THE BEST MEDICATION AVAILABLE TO
ME REDUCES DISABILITY PROGRESSION BY
AN AVERAGE OF 25%.

THAT'S A FEW MORE YEARS WALKING
ON YOUR OWN TWO FEET.


IN THE FIRST YEAR, I WAS THINKING I HAVE
EVERY OUNCE OF HOPE THAT THIS WILL GET
BETTER AND I WILL GO HOME. THAT WAS A
DISEASE IN ITSELF ACTUALLY I HAD TO
OVERCOME.

I THINK YOU STILL
NEED TO DO THAT.

Wouldn't it be better to learn from our
experiences + try to use them to
understand what might happen to
you?

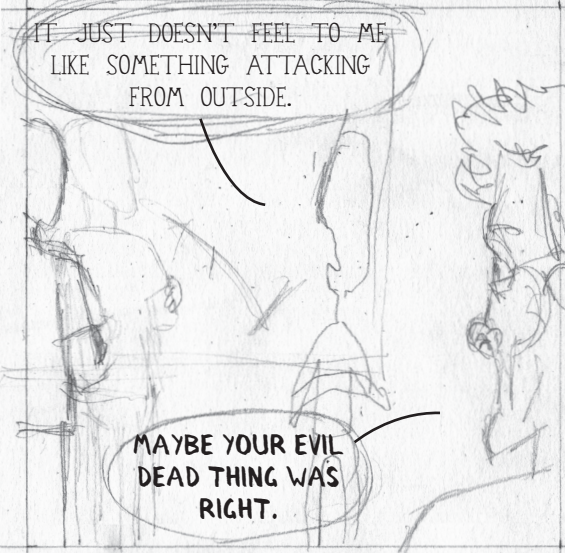
I AM DOING THAT!

IT TERRIFIES ME.

A man in a wheelchair is shown in profile, facing right. A woman with long hair is standing and talking to him. The background is a simple sketch of a room with a window.


THAT'S WHY I WAS UPSET
TO SEE YOU IN A WHEELCHAIR
IN A PHOTO FROM THE
MID-90S

THAT FUCKER'S HUNGRY
AGAIN. IT NEVER LETS UP.

A man in a wheelchair is shown in profile, facing right. A woman with long hair is standing and talking to him. The background is a simple sketch of a room with a window.

IT JUST DOESN'T FEEL TO ME
LIKE SOMETHING ATTACKING
FROM OUTSIDE.

MAYBE YOUR EVIL
DEAD THING WAS
RIGHT.

A man in a wheelchair is shown from the front, looking distressed with his hands outstretched. The background is a simple sketch of a room with a window.

I CAN FEEL IT IN MY LEGS, LIKE A
SCREW TIGHTENING, PRETTY MUCH
ALL THE TIME NOW.

A man in a wheelchair is shown in profile, facing right. A woman with long hair is standing and talking to him. The background is a simple sketch of a room with a window.

ALL THIS TALK OF
SCARY MONSTERS...

A man in a wheelchair is shown from the front, looking distressed with his hands outstretched. The background is a simple sketch of a room with a window.

I KNOW, THIS
ONE EXISTS