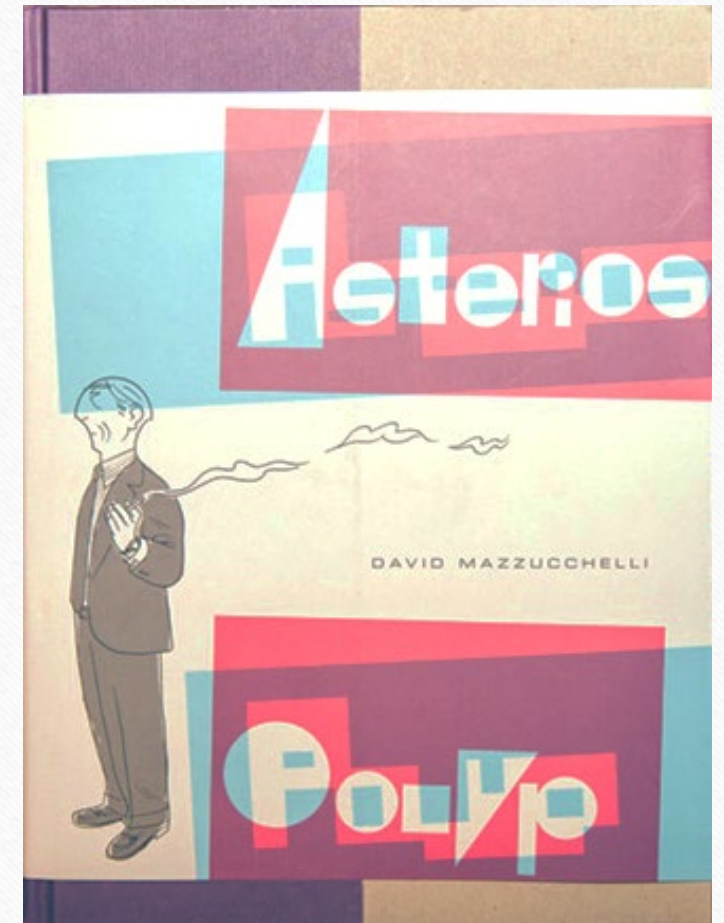


# Using comics to promote green and inclusive architecture

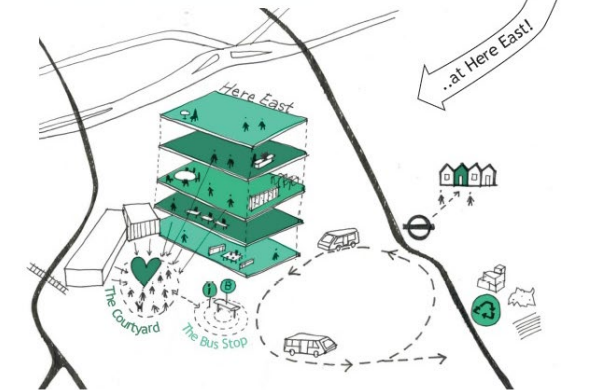
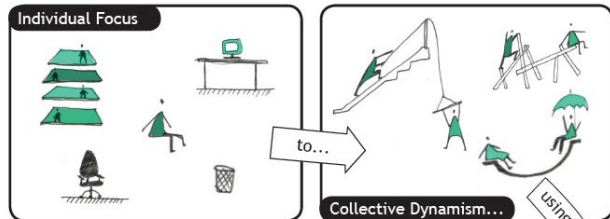
---

Alex Fitch (University of Brighton)

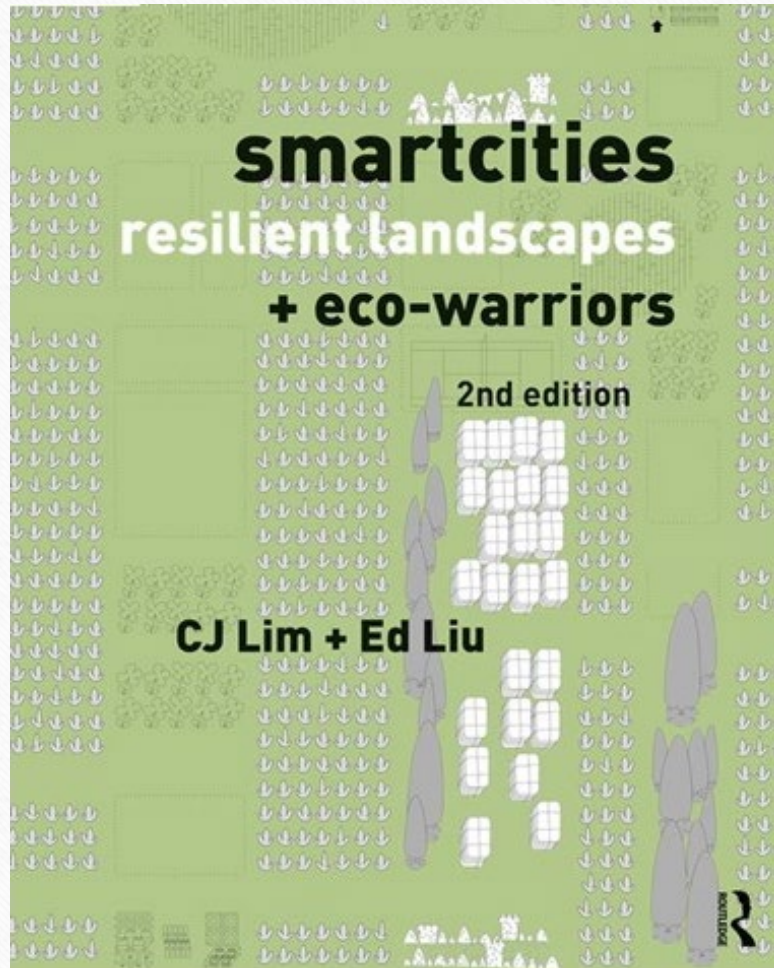








erectarchitecture.

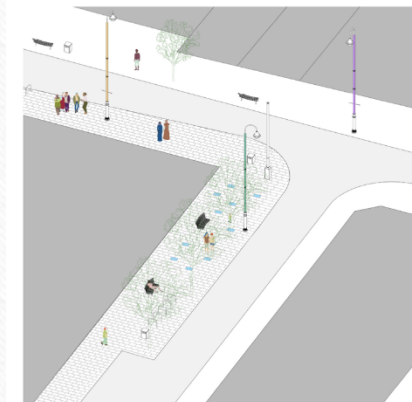


## PILGRIM'S WAY

**LOCATION**  
Off High Street North

**DESIGNER**  
Sabba Khan, a Newham based artist

**SHAPE NEWHAM**  
Imagining public spaces together



**DESCRIPTION**  
Using transcripts from Shape Newham Radio, artist and life-long Newham resident Sabba Khan has compiled a testimony that she hopes will inspire other Newham residents.

Newham has one of the youngest and most ethnically diverse populations in the country. Sabba will use this Shape Newham project to celebrate the diversity and energy of our borough.

Twelve written and illustrated panels are embedded into the pavement of Pilgrim's Way, off East Ham High Street North. The panels use text and drawings to tell a story of what it means to live together in Newham, shoulder to shoulder to one another. We will be encouraged to stumble upon the artwork and take a moment out to read the testimony; encouraging us to see ourselves and our neighbours in a different way.



This is one of 18 Shape Newham projects, please see our website: [www.shapenewham.co.uk](http://www.shapenewham.co.uk) for more information. Please note that these are proposals only, further due diligence is required and final designs are likely to include minor changes.

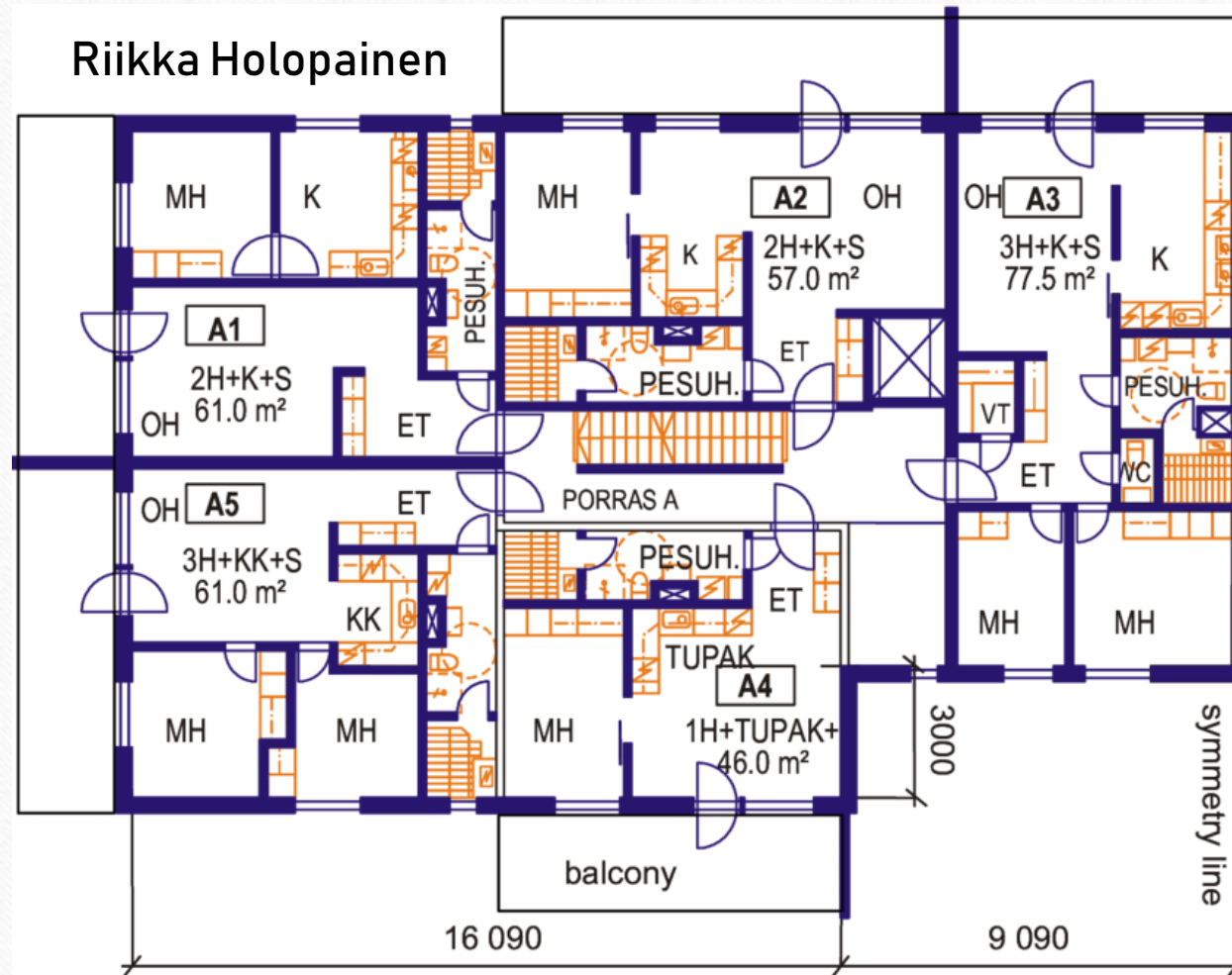
Newham London

People at the Heart of Everything We Do

AOC CarverHaggard



## Riikka Holopainen

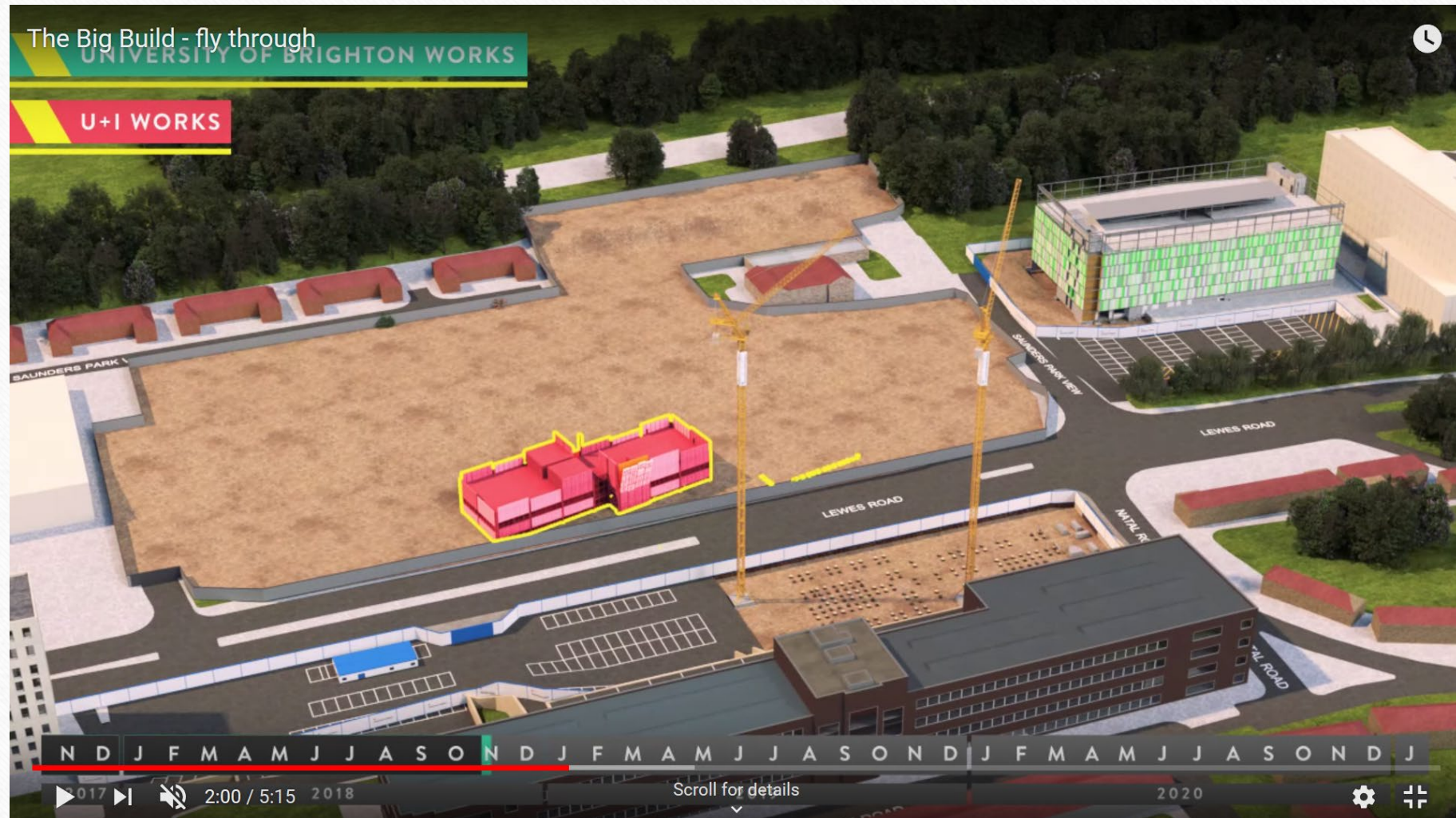






**'The Big Build' – University of Brighton**





<https://www.youtube.com/watch?v=-yPY5OJrNk8?start=120>





**'Adventures in Design' – David Mackenzie and Will Morris**  
**Victoria and Albert Museum of Design building site**  
**Riverside, Dundee, 2015**



## WORKING AT HEIGHT

The Work at Height Regulations 2005 covers work both at heights and at or below ground level. Falls from heights account for more than 50% of accidents on construction sites.

Use a risk based assessment of how to work safely at heights. There is no distinction between low and high falls therefore precautions are required to be taken to minimize the distance and risk of injury from all falls.

If possible avoid work at height, otherwise use appropriate equipment and protective measures to ensure the risk to workers is minimized or eliminated.

Ensure everyone working at height is competent and suitably trained.



Always check that equipment is available and in good condition and that emergency procedures are in place should an injury occur.

THINK: Access, Equipment, Weather, Emergency Procedures.

## SITE TRAFFIC

Every year a significant number of workers are killed or injured by moving vehicles on site.

To reduce the risk of an incident involving site traffic:

- Limit the number of vehicles on site
- Use gates and barriers to control traffic flow
- Set speed limits
- Avoid the likelihood of vehicles reversing if possible
- Keep vehicles and pedestrians apart whenever possible
- Provide road signage to warn and direct drivers and pedestrians
- Select the most suitable vehicle for the task and ensure it has working lights, mirrors and horn



Ensure that pedestrian workers can be seen, high visibility clothing and adequate lighting on site is essential.

Be seen and not remembered.



## ELECTRICITY

Electricity can kill and electrical equipment is to be found on every site. Power tools are used extensively on site and these should be earthed and have trip devices or RCD's to ensure power is cut if any live part is contacted.



Electrical systems should be checked regularly. A visual check will pick up 95% of faults or damage. Damage to cable is a common problem and using armoured cable or running cable at ceiling height can often minimise the risk of it being damaged. Check RCD's daily to ensure they are working properly. Regular testing will also identify faults or damage which cannot be visually detected.

Another cause of death or injury on site is contact with overhead power cables, this is most likely when using tall machinery like cranes and large diggers.

The safest option where power lines are present close to the site is to make them dead or get them re-routed for the duration of the site work.

If this cannot be done then high visibility barriers should be erected to prevent machines getting too close to power lines.



## PPE & SIGNAGE

### Personal Protective Equipment

The Personal Protective Equipment at Work Regulations 1992 places a duty on employers to provide suitable Personal Protective Equipment (PPE) when an assessment has demonstrated a requirement.

The mandatory signage for suitable PPE equipment commonly worn on site is shown below alerting workers for the need to wear such equipment.



### Signage

All site workers should be familiar with safety signs and signals on site and these fall into the following categories:



**Mandatory**  
Used to tell you what to do.

**Prohibitive**  
Used to tell you what not to do.

**Safe Condition**  
Used to tell you the location of safety equipment and safe routes of passage.

**Warning**  
Used to alert you to a risk hazard so increasing your awareness.

**Fire Fighting**  
Used to tell you the location of fire fighting equipment.

# Trussed rafters on site

If in doubt please ask



TRUSSED RAFTER ASSOCIATION  
TRA









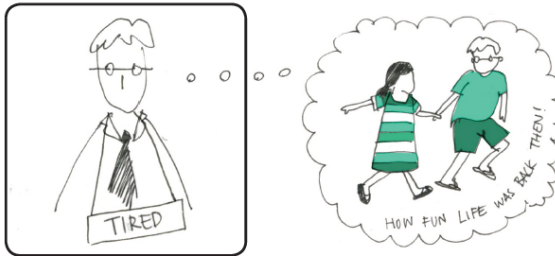
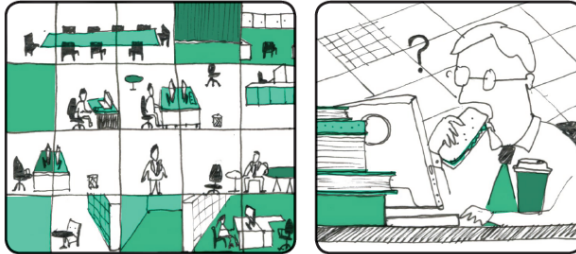




<https://www.bovishomes.co.uk/news/clanfield-kids-communicate-key-safety-message/>



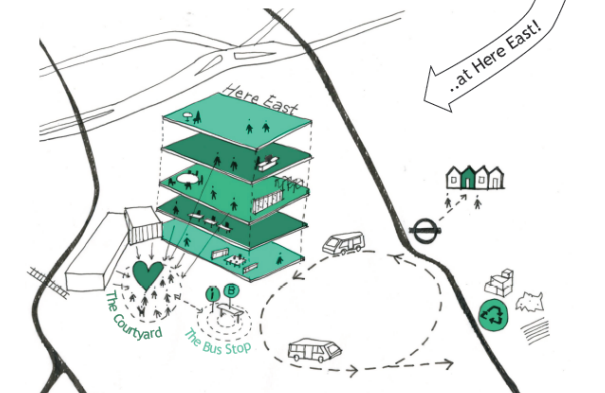
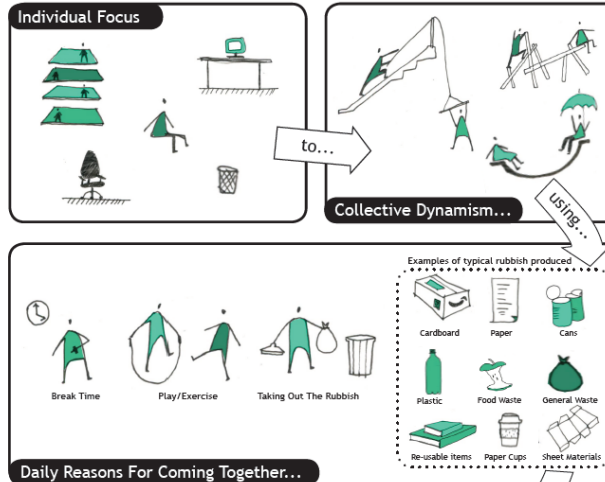
## The Situation..



Let's make everyday chores fun with BIN toGATHER

erectarchitecture.

## The Idea...

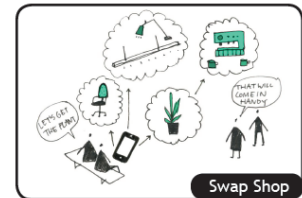
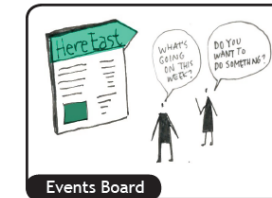


erectarchitecture.

## The Bus Stop: Meeting Point and Swap Shop



How can we SPARK a conversation?



erectarchitecture.

'BIN toGATHER at Here East' – Susanne Tutsch and Erect Architecture

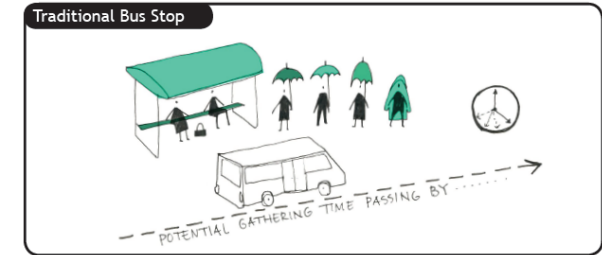


Susanne Tutsch : “I think they thought we were a tiny bit bonkers because this was, sort of, just a comic we drew where we were taking the idea to an extreme...

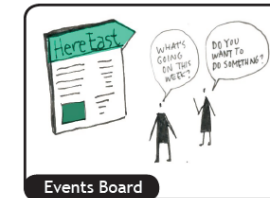
where people come together, from the bus stop, actually, because everyone is so disjointed from the rest of London; how you get to it.

How can the swap shops work, how does it increase activity?”

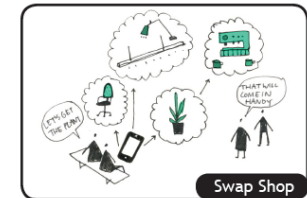
The Bus Stop: Meeting Point and Swap Shop



How can we SPARK a conversation?



Events Board



Swap Shop

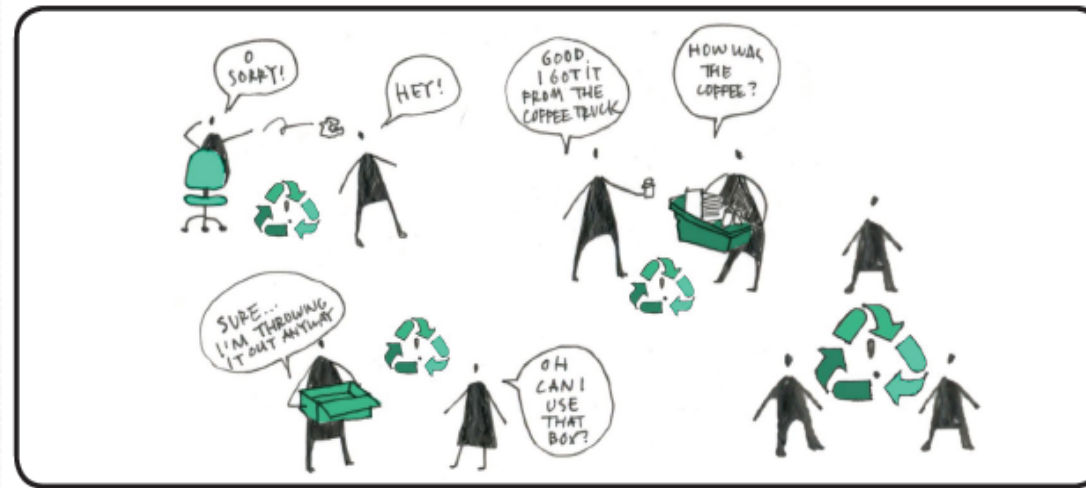


Green Bus Shelter Where Sitting Alone Is Not Possible!

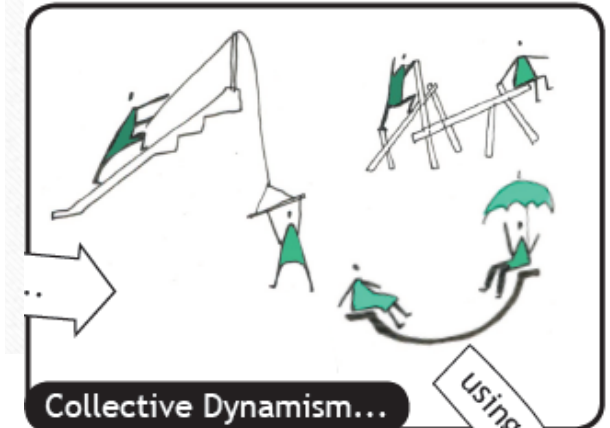
erectarchitecture.

‘BIN toGATHER at Here East’ – Susanne Tutsch and Erect Architecture



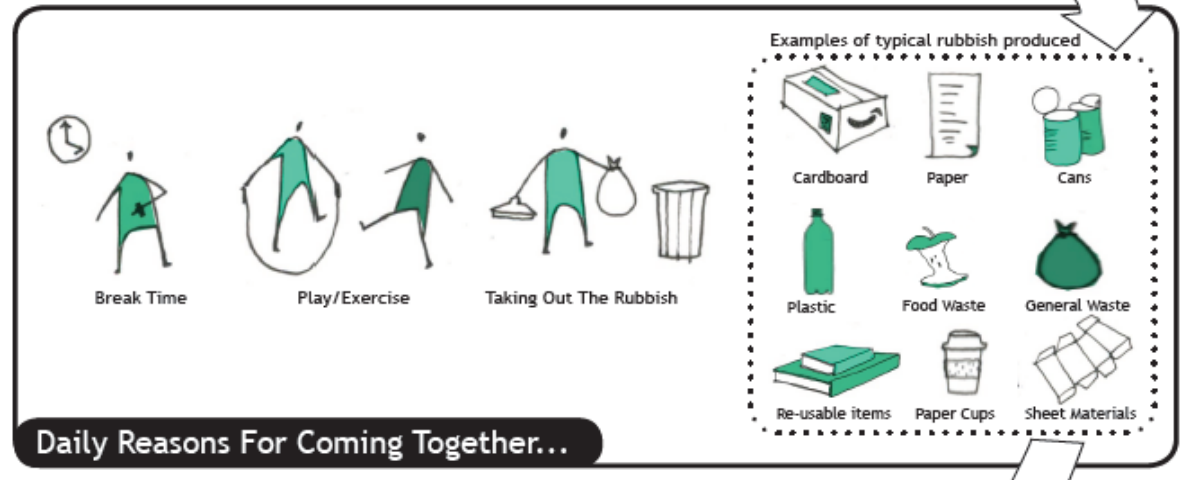


Let's make everyday chores fun with BIN toGATHER



Collective Dynamism...

Using...



Daily Reasons For Coming Together...

'BIN toGATHER at Here East' – Susanne Tutsch and Erect Architecture



### The Courtyard Currently



### Activating the Courtyard with BIN toGATHER



### Exercise, Recycling and Waste Pop-ups



### Recycling and Team Sports

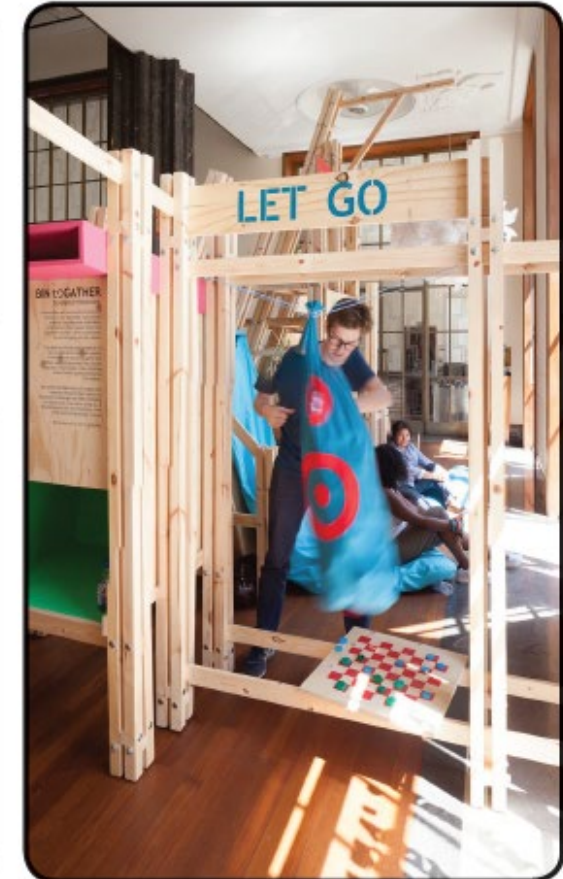
'BIN toGATHER at Here East' – Susanne Tutsch and Erect Architecture






Set within the RIBA and built largely from materials found in their vaults, our installation challenged the RIBA community to recycle and meet whilst doing so. As recycled waste filled the installation a new living room emerged.

The installation was a competition winning research proposal and built as part of the RIBA 'Constructing Communities' season within the London Festival of Architecture 2016.



'BIN toGATHER at Here East' – Susanne Tutsch and Erect Architecture





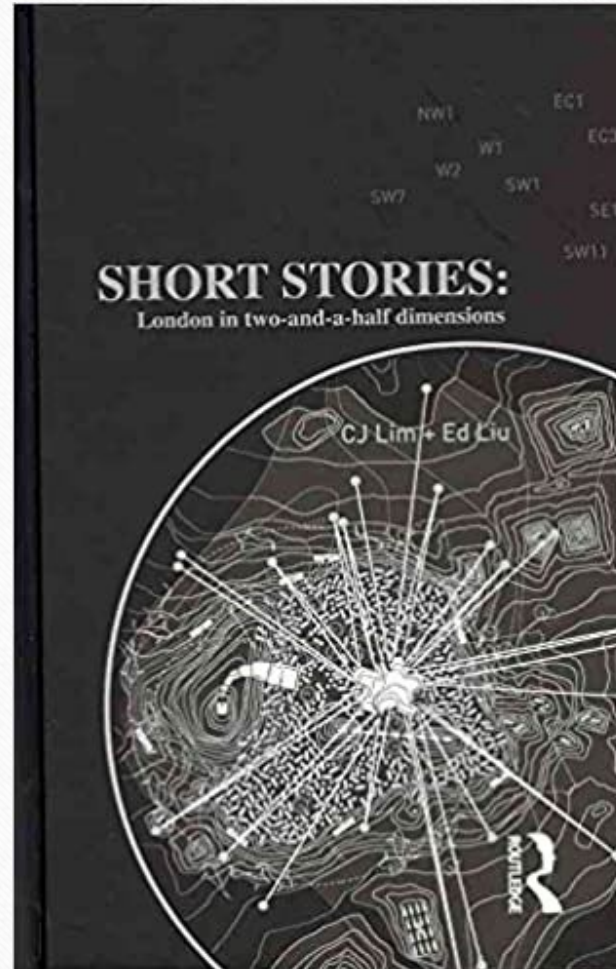
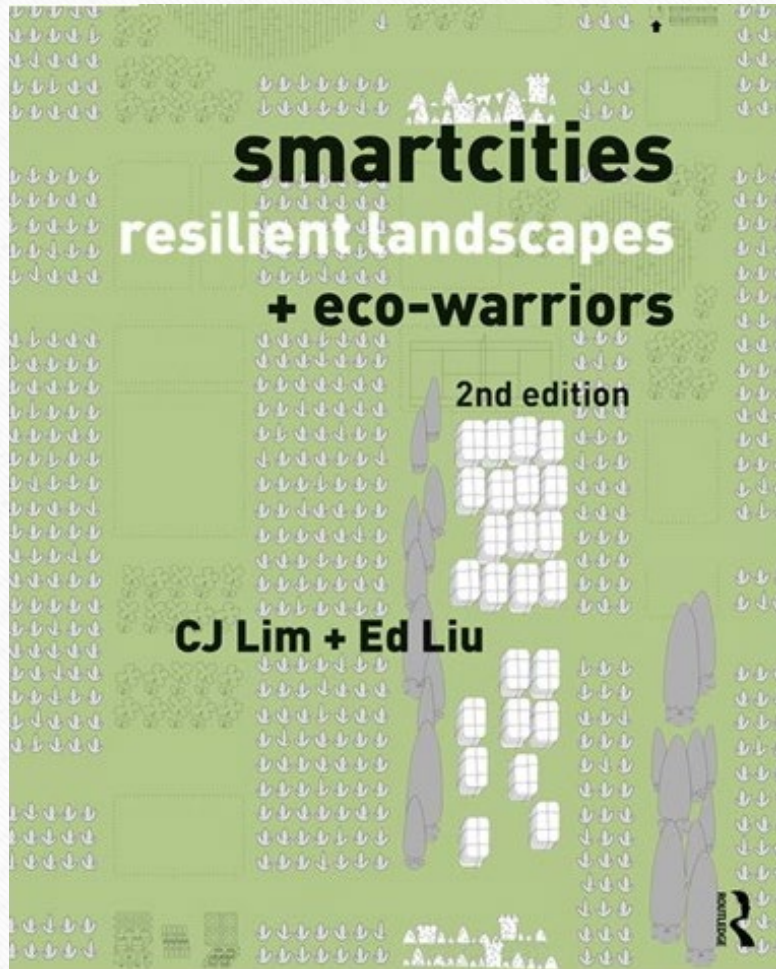
Comics make the task of understanding a text  
“more enjoyable or likely to enhance learning”  
(Hammond and Danaher p. 200)

“I like to start my classes by sharing a comic because  
it tends to put my students in a more receptive mood  
for the lesson that follows...

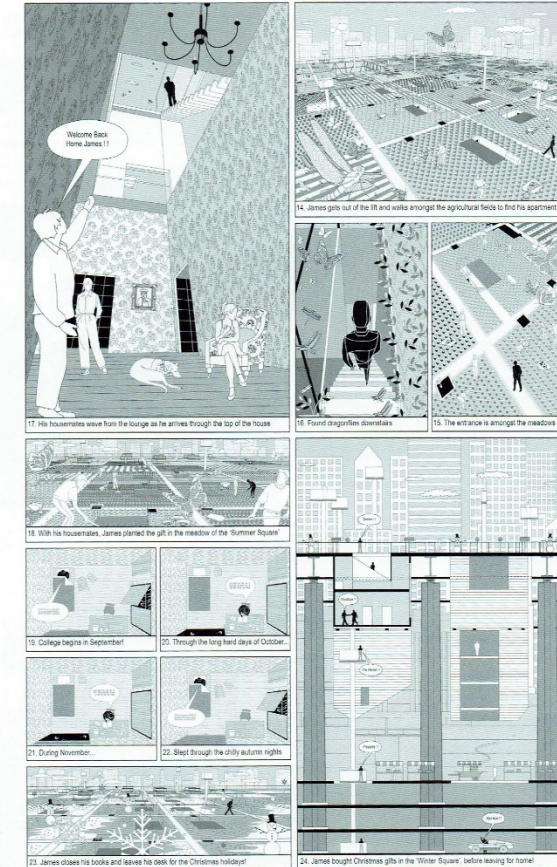
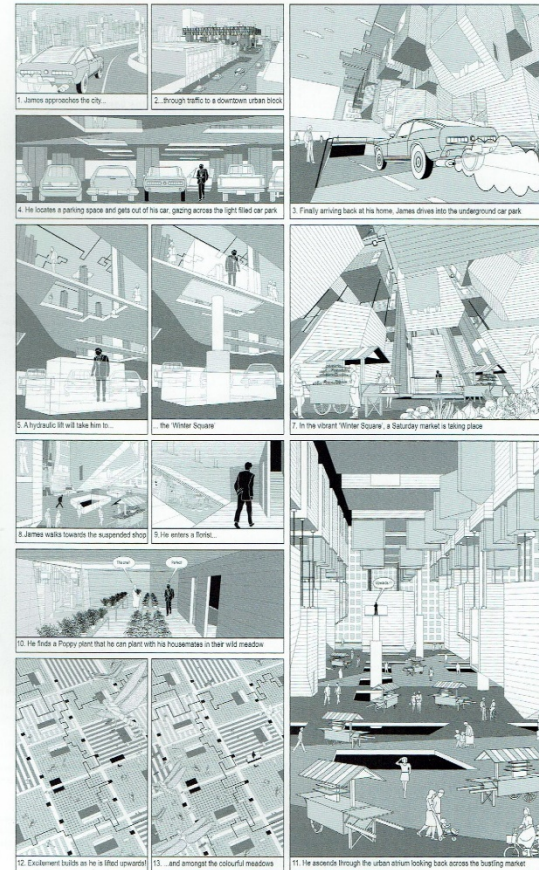
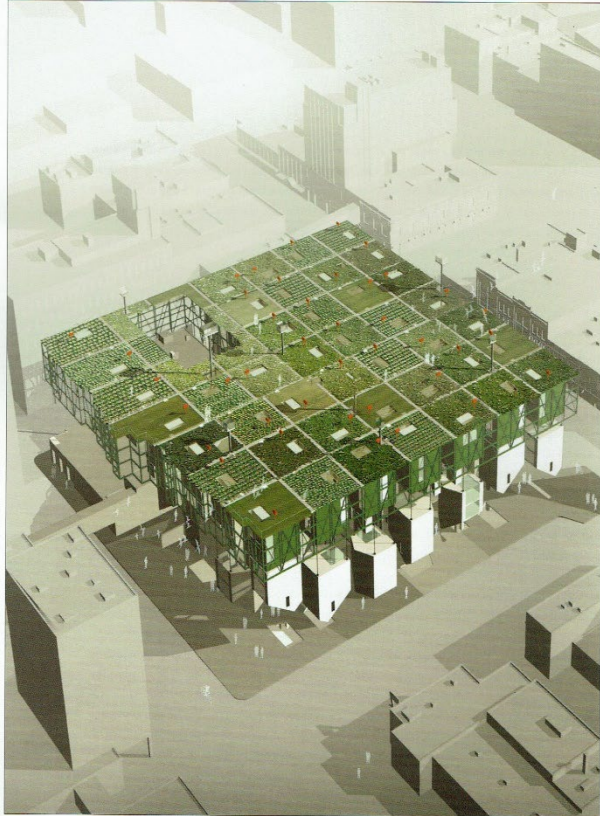
Comics are a great way to ease the pain.”  
(Cheesman, p. 48)



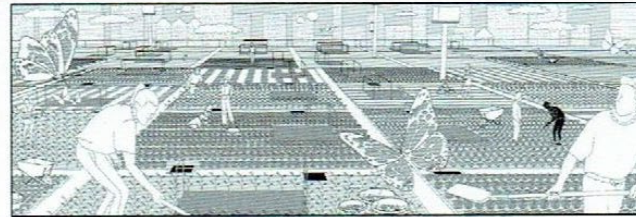




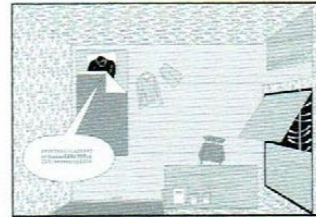




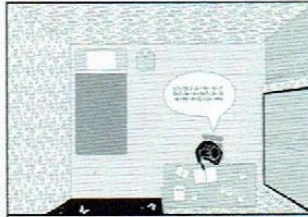




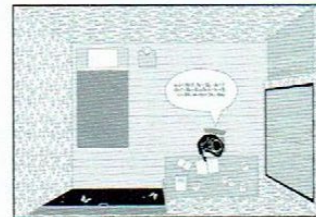
18. With his housemates, James planted the gift in the meadow of the 'Summer Square'



19. College begins in September!



20. Through the long hard days of October...



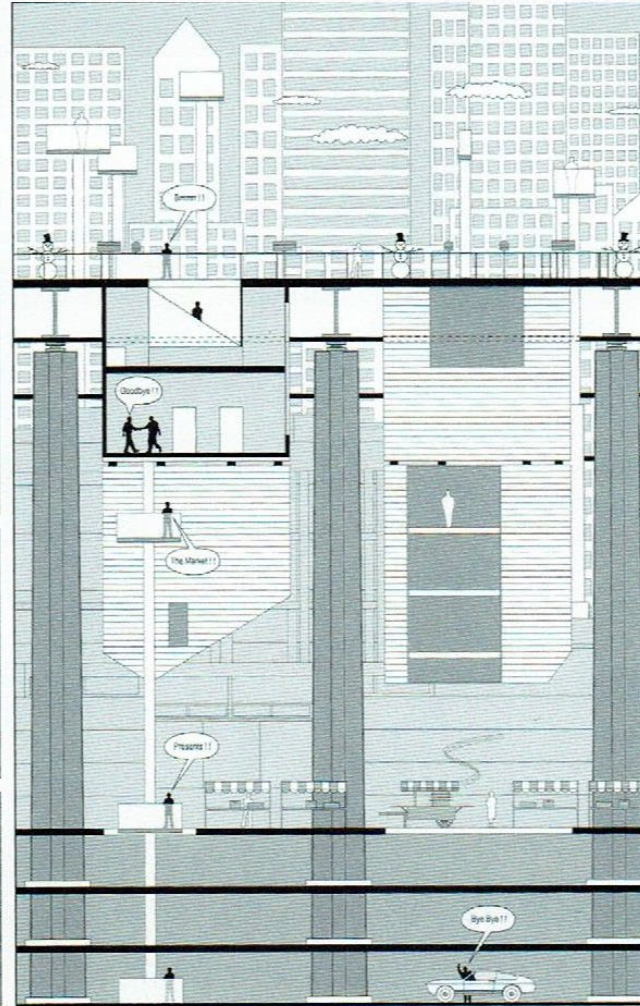
21. During November...



22. Slept through the chilly autumn nights

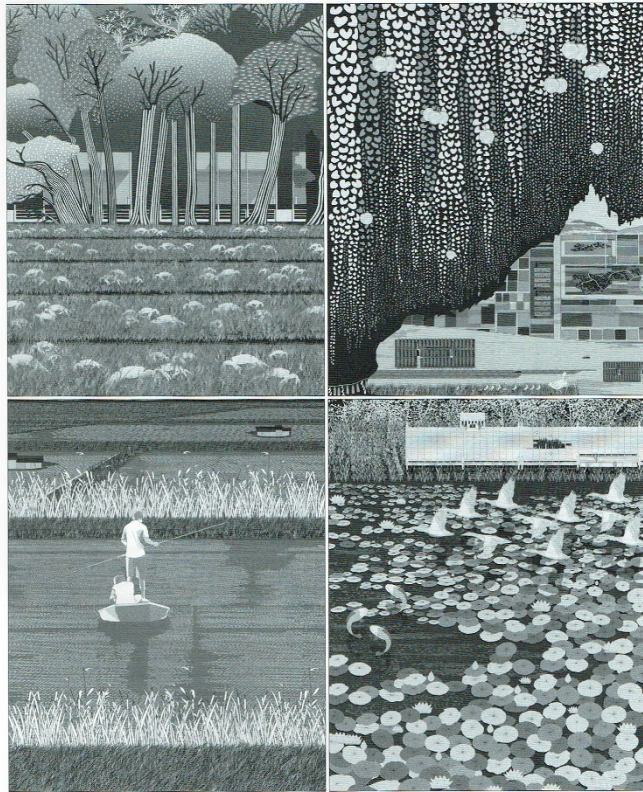


23. James closes his books and leaves his desk for the Christmas holidays!



24. James bought Christmas gifts in the 'Winter Square', before leaving for home!

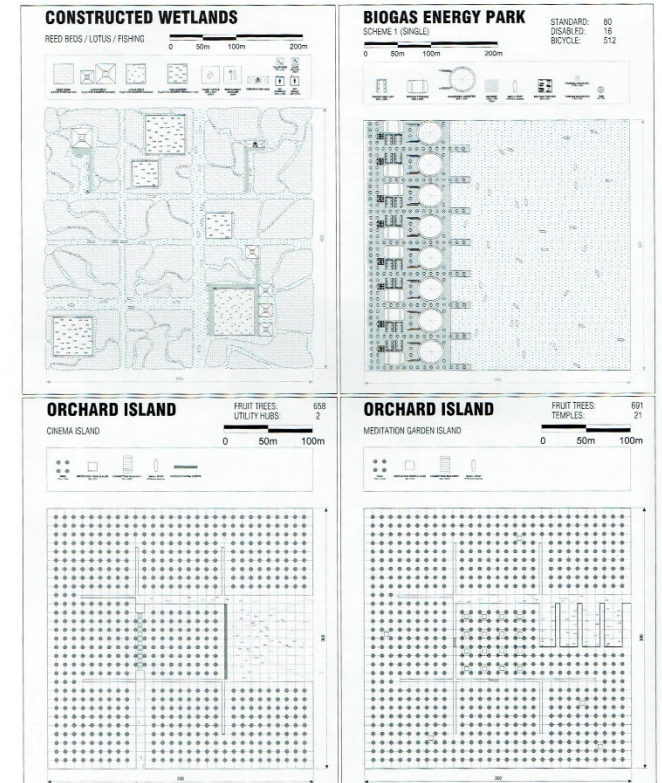




self-regulate: The City of a Thousand Lakes



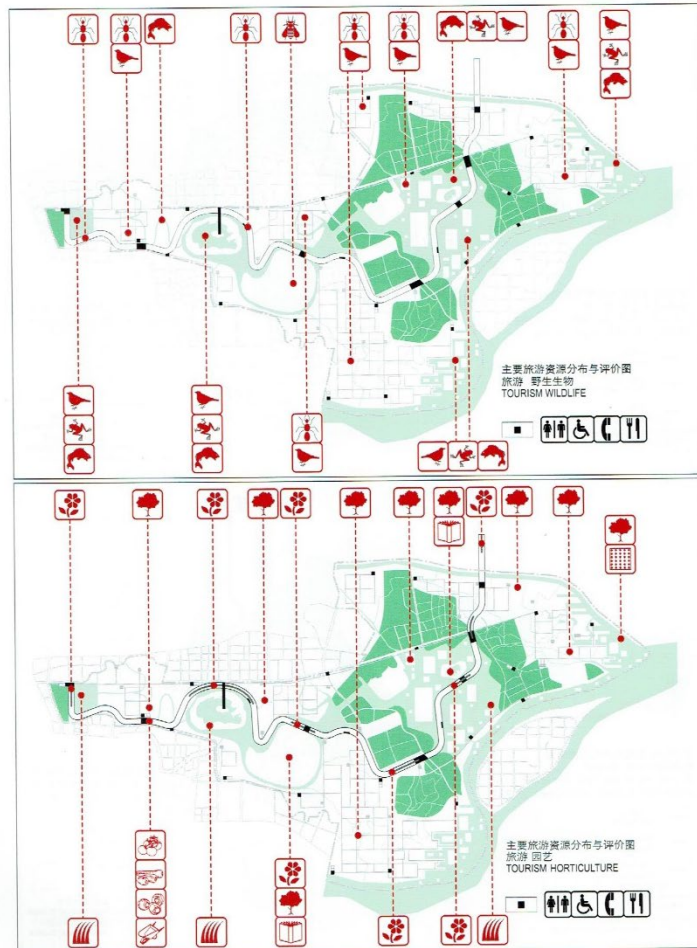
201



smartcities, resilient landscapes + eco-warriors pp. 200-202 – C.J. Lim and Ed Liu

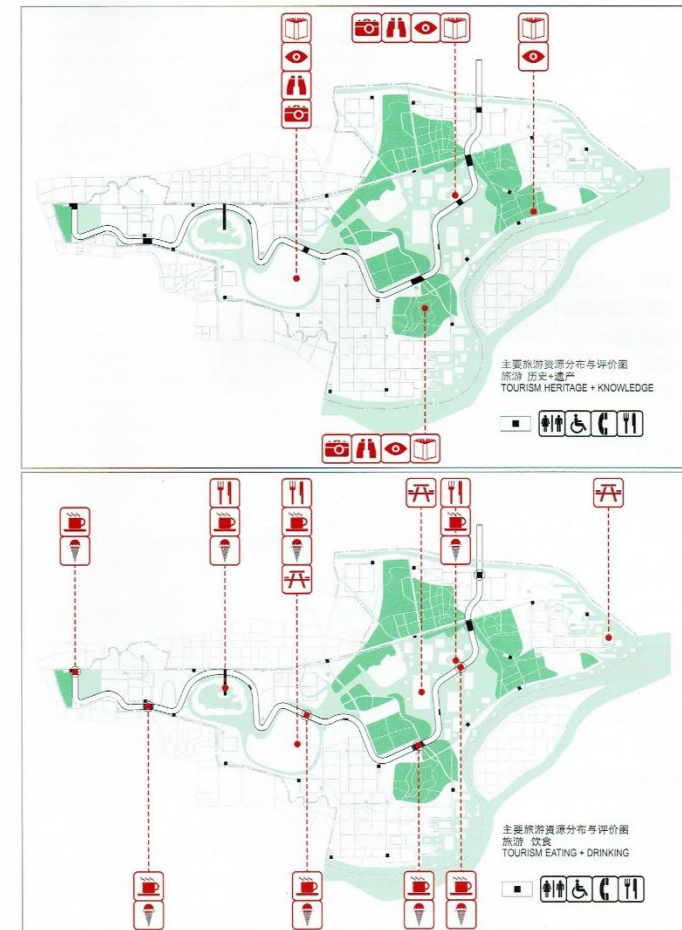


258



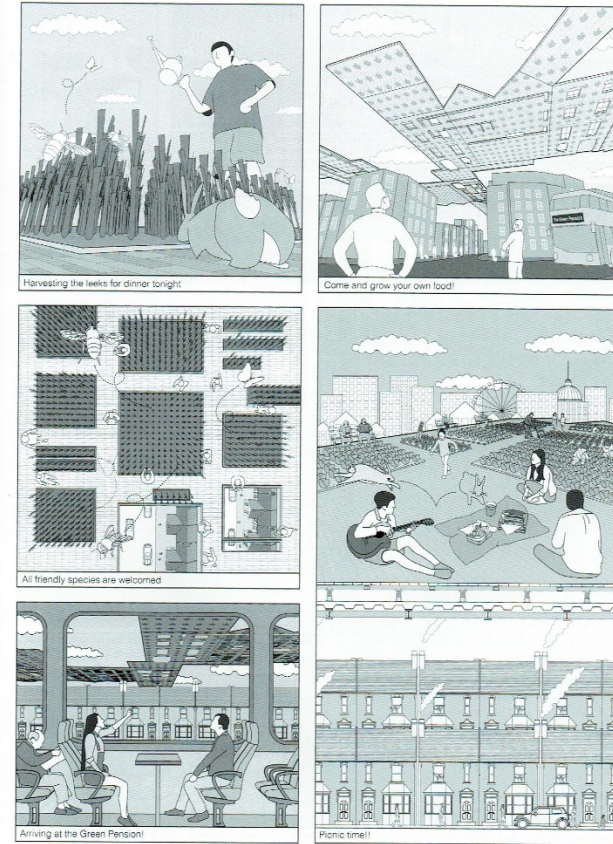
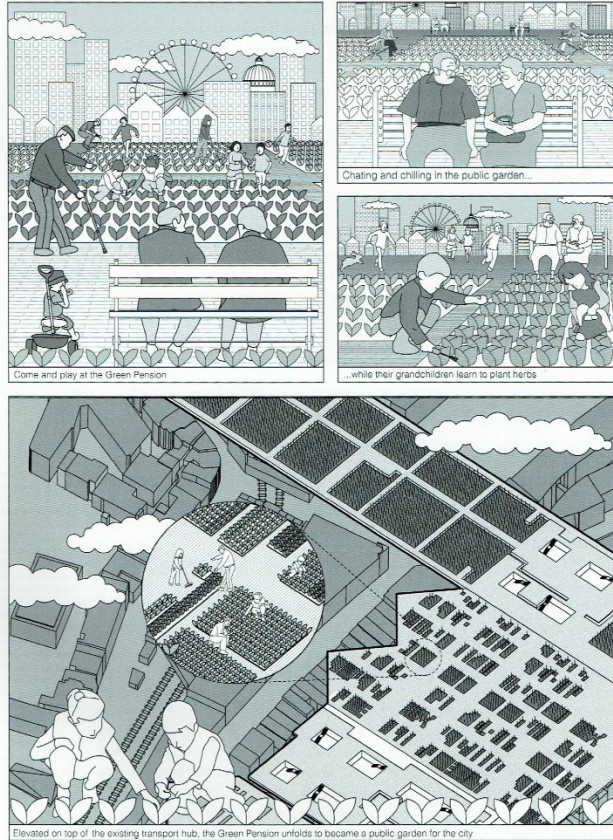
adaptiveness: Wanmu Orchard Wetland

259

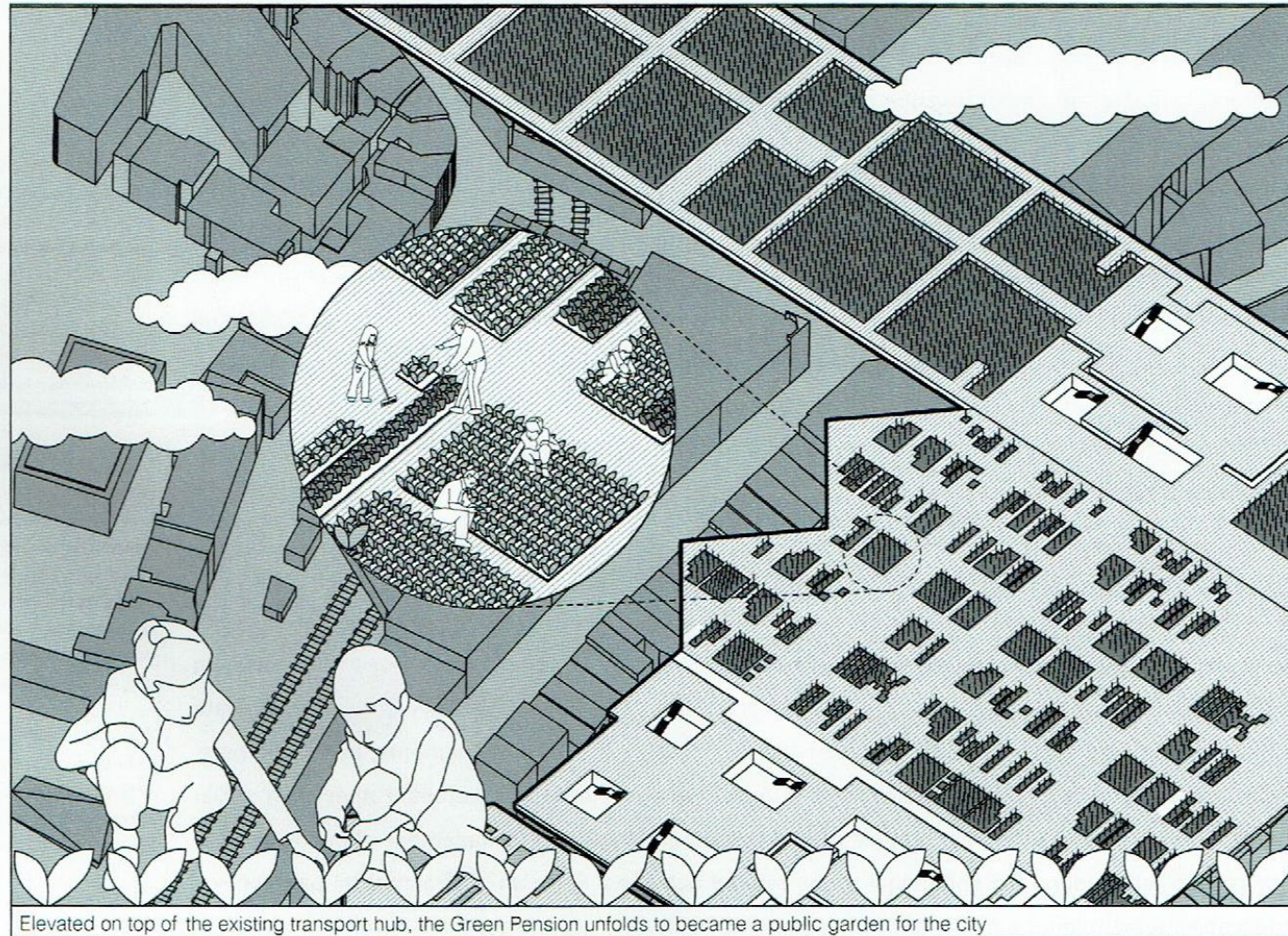


smartcities, resilient landscapes + eco-warriors pp. 258-259 – C.J. Lim and Ed Liu







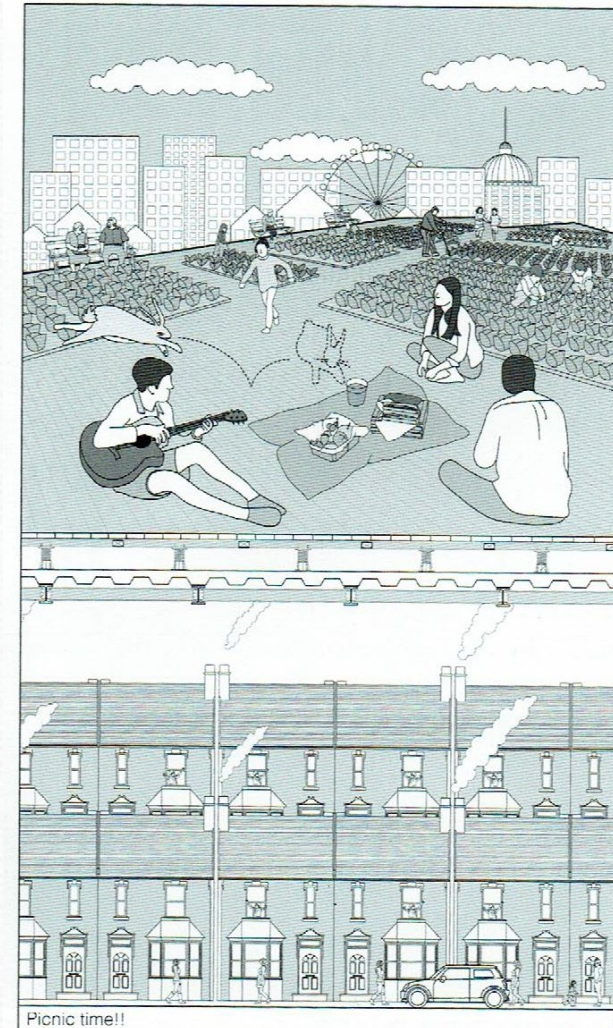


Elevated on top of the existing transport hub, the Green Pension unfolds to become a public garden for the city

smartcities, resilient landscapes + eco-warriors p. 233 – C.J. Lim and Ed Liu

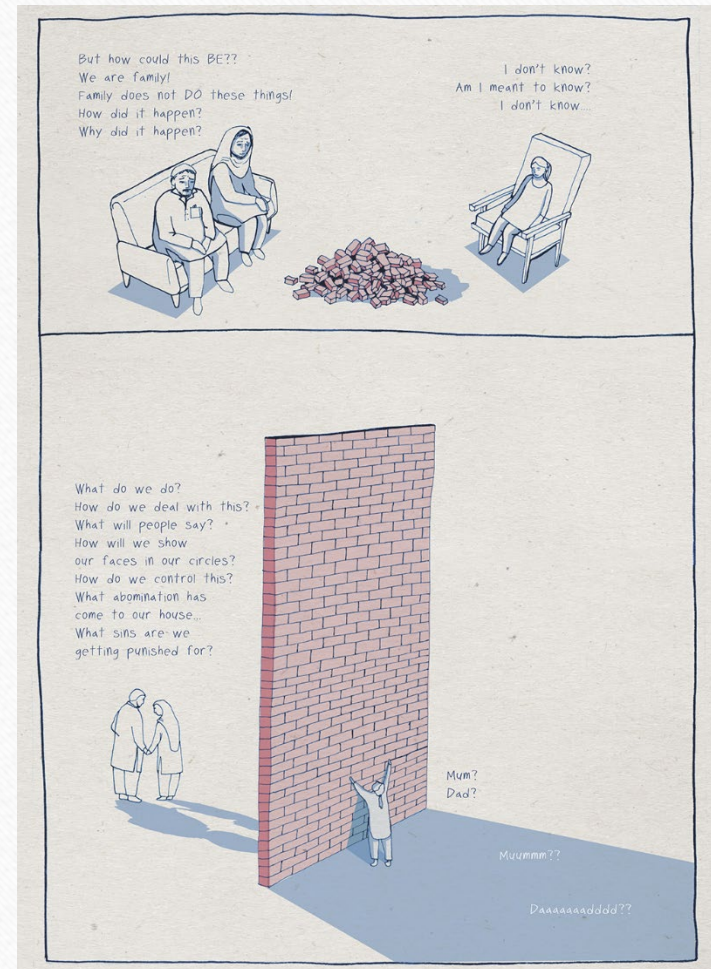
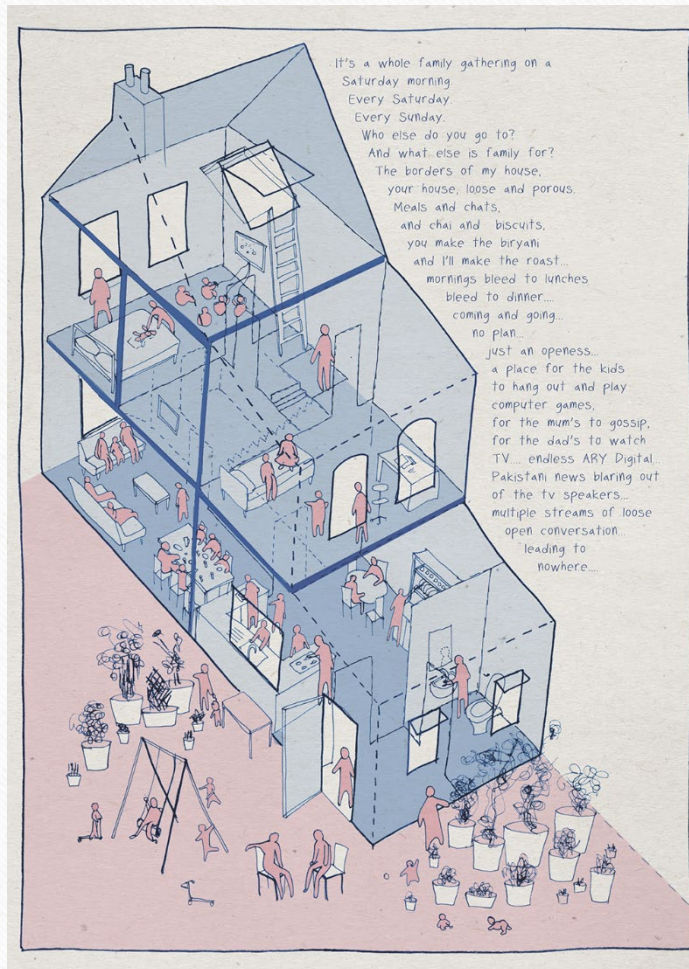
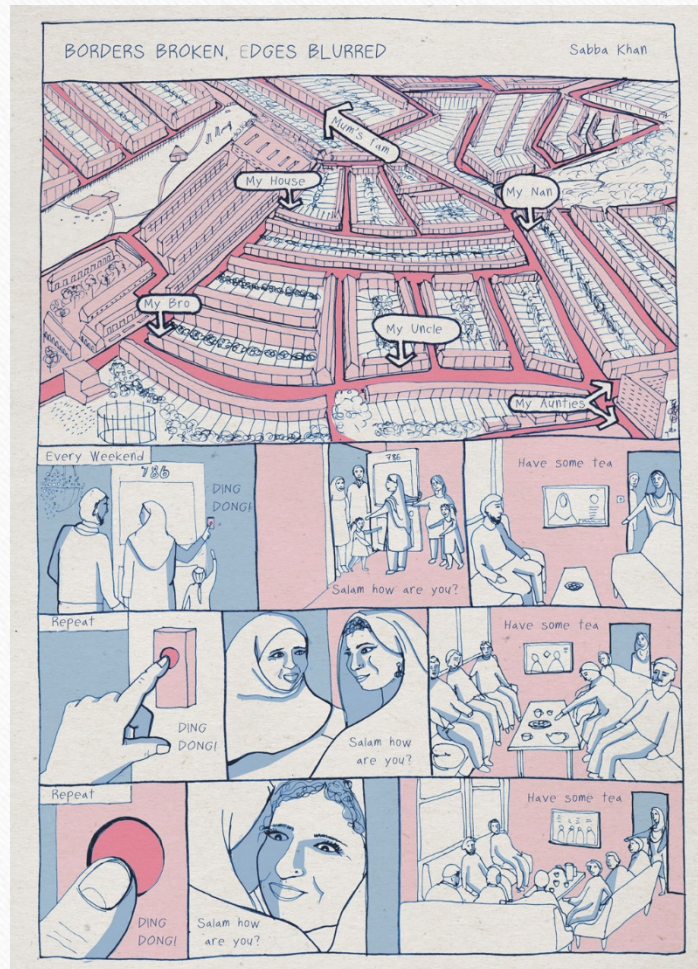


C.J. Lim: “I’ve always been interested in story-telling, and I always feel that buildings, architecture, territories, spaces that we design and construct, and build, are vessels to celebrate narratives of humanity. And, I think that’s the basic principle of most of my work.”



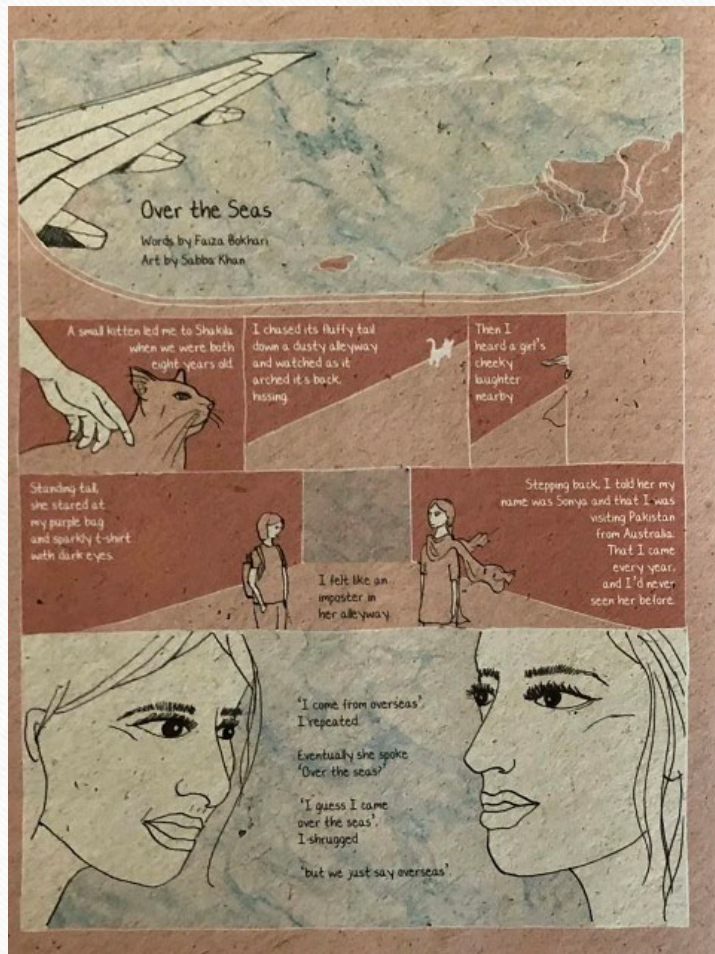
smartcities, resilient landscapes + eco-warriors p. 259 – C.J. Lim and Ed Liu





**'Borders Broken, Edges Blurred' – Sabba Khan**





'Over the Seas' – Faiza Bokhari & Sabba Khan / 'Little Man of the House' – Shagufta K. Iqbal & Khan





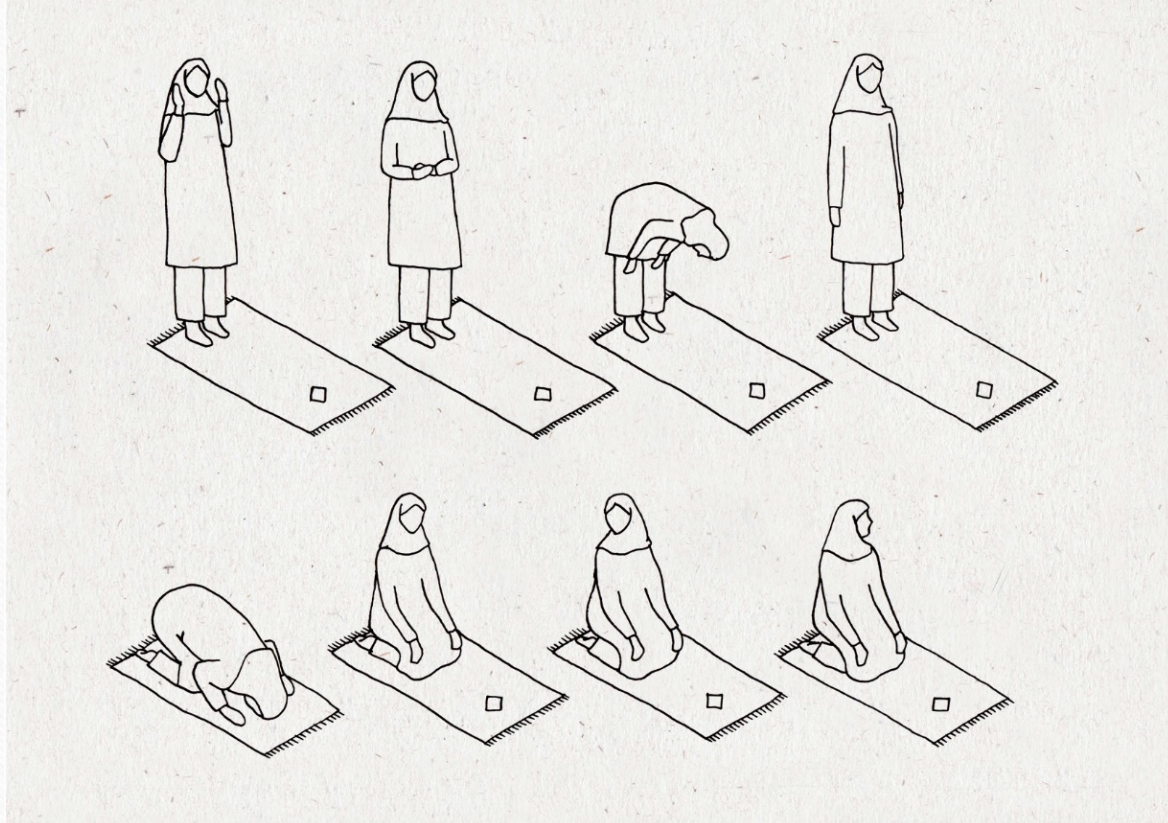
Leaflet and poster for 'Faith in 2020', 62 Gladstone Street, Peterborough – Sabba Khan





Photos on Khan Bonshek website – [www.khanbonshek.com](http://www.khanbonshek.com)





'Discovering Sacred Texts' / 'Roti' and augmented rolling pin- Sabba Khan



## PILGRIM'S WAY

### LOCATION

Off High Street North

### DESIGNER

Sabba Khan, a Newham based artist

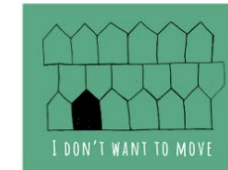
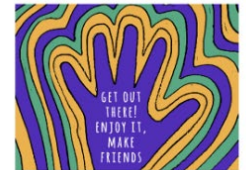
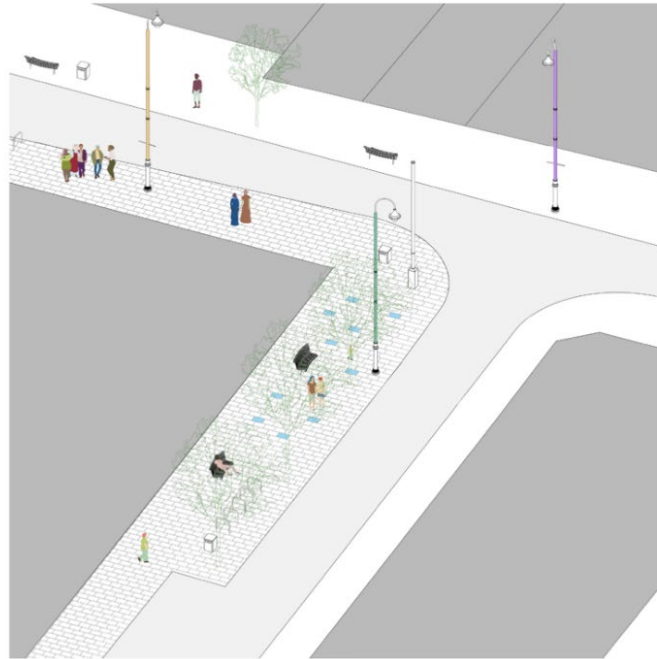


### DESCRIPTION

Using transcripts from Shape Newham Radio, artist and life-long Newham resident Sabba Khan has compiled a testimony that she hopes will inspire other Newham residents.

Newham has one of the youngest and most ethnically diverse populations in the country. Sabba will use this Shape Newham project to celebrate the diversity and energy of our borough.

Twelve written and illustrated panels are embedded into the pavement of Pilgrim's Way, off East Ham High Street North. The panels use text and drawings to tell a story of what it means to live together in Newham, shoulder to shoulder to one another. We will be encouraged to stumble upon the artwork and take a moment out to read the testimony; encouraging us to see ourselves and our neighbours in a different way.



This is one of 18 Shape Newham projects, please see our website: [www.shapenewham.co.uk](http://www.shapenewham.co.uk) for more information. Please note that these are proposals only, further due diligence is required and final designs are likely to include minor changes.



People at the Heart  
of Everything We Do

AOC CarverHaggard



'Pilgrim's Way' – Sabba Khan



Sabba Khan: “(Pilgrim’s Way is) a public art project with Newham.

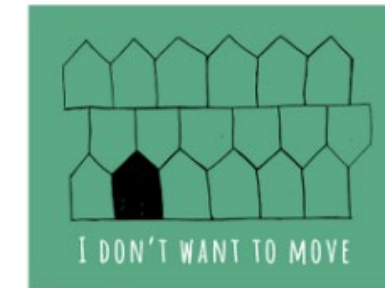
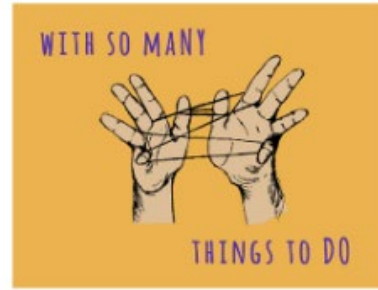
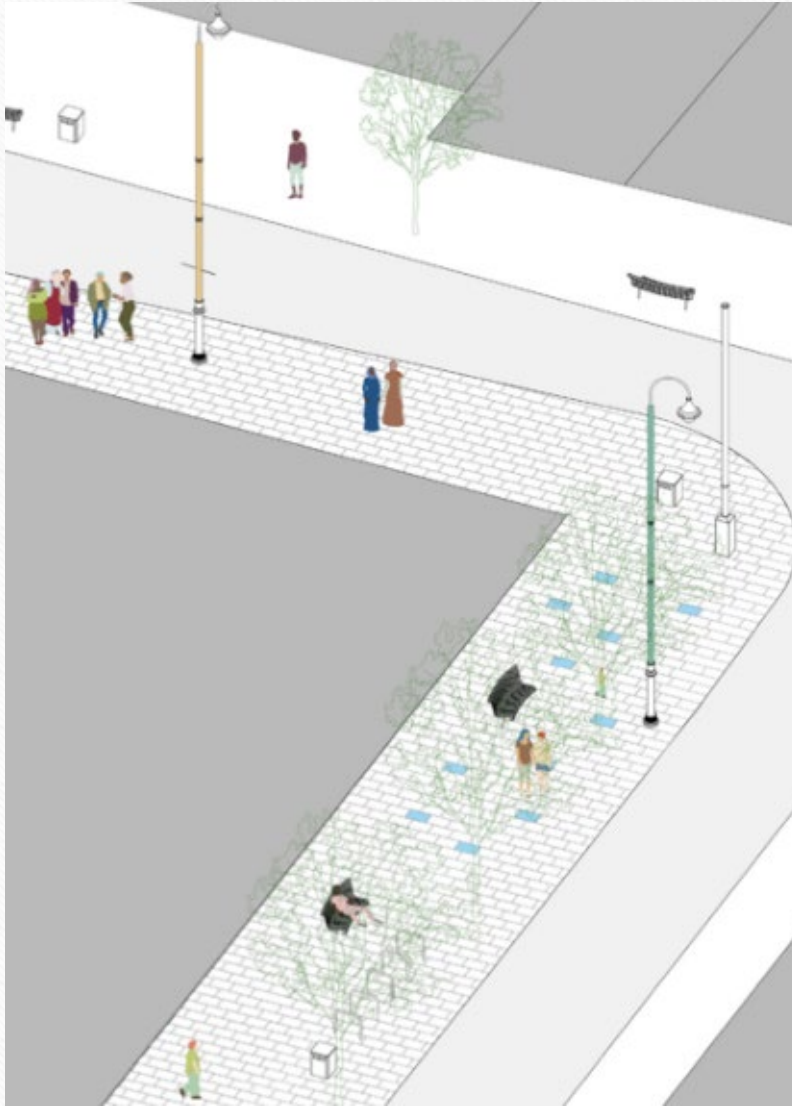
So, this is a site in East Ham, taking local residents’ lived experiences and turning them into the paving. People can, sort of, go and read on the floor... probably be laser-cut stuff that’s then embedded into the concrete.

I really like looking at comics and storytelling and how that can move in lots of different dimensions.”



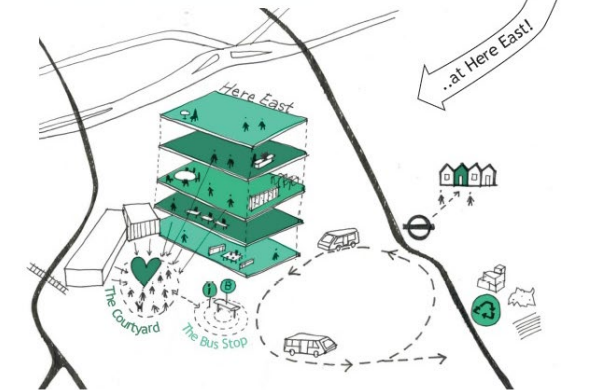
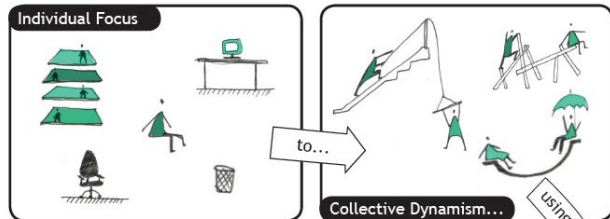
‘Pilgrim’s Way’ – Sabba Khan



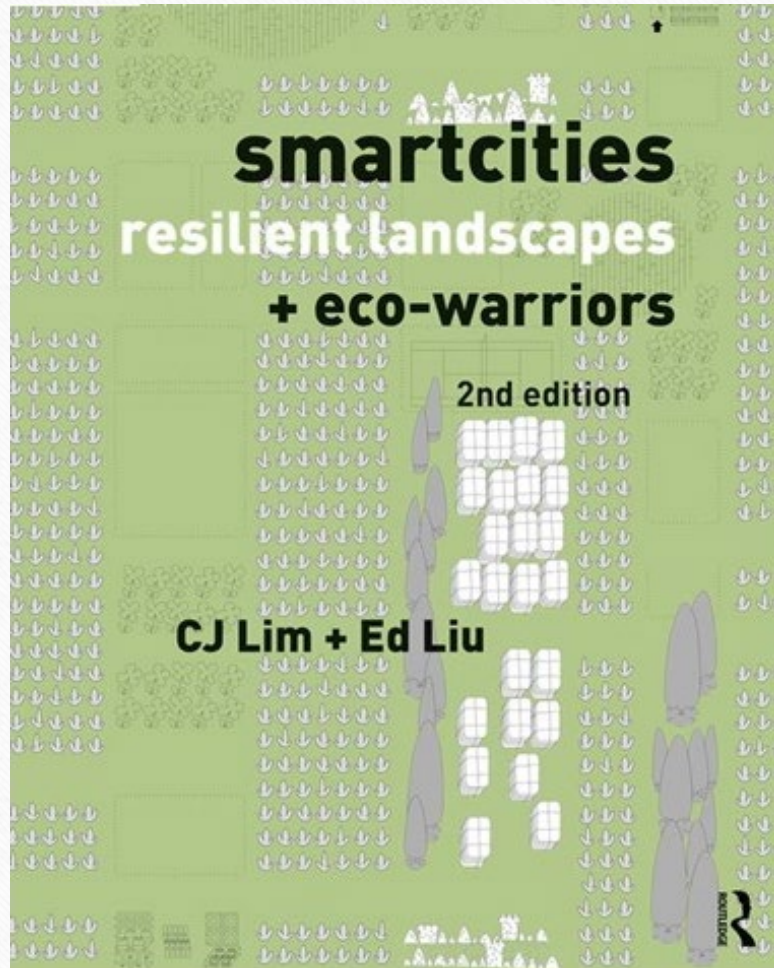


'Pilgrim's Way' – Sabba Khan





erectarchitecture.

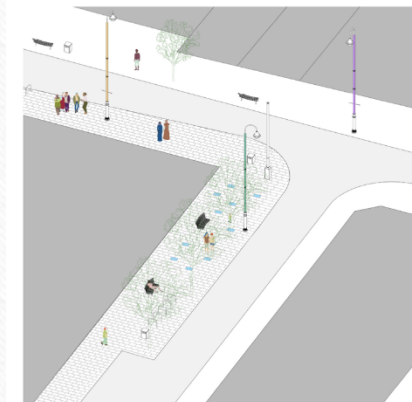


## PILGRIM'S WAY

**LOCATION**  
Off High Street North

**DESIGNER**  
Sabba Khan, a Newham based artist

**SHAPE NEWHAM**  
Improving public spaces together



**DESCRIPTION**  
Using transcripts from Shape Newham Radio, artist and life-long Newham resident Sabba Khan has compiled a testimony that she hopes will inspire other Newham residents.

Newham has one of the youngest and most ethnically diverse populations in the country. Sabba will use this Shape Newham project to celebrate the diversity and energy of our borough.

Twelve written and illustrated panels are embedded into the pavement of Pilgrim's Way, off East Ham High Street North. The panels use text and drawings to tell a story of what it means to live together in Newham, shoulder to shoulder to one another. We will be encouraged to stumble upon the artwork and take a moment out to read the testimony; encouraging us to see ourselves and our neighbours in a different way.



This is one of 18 Shape Newham projects, please see our website: [www.shapenewham.co.uk](http://www.shapenewham.co.uk) for more information. Please note that these are proposals only, further due diligence is required and final designs are likely to include minor changes.

Newham London

People at the Heart of Everything We Do

AOC CarverHaggard





Cheesman, Kerry. "Using Comics in the Science Classroom: A Pedagogical Tool". *Journal of College Science Teaching*, Vol. 35, No. 4 (January/February 2006), pp. 48–51

Davies, Dominic. *Urban Comics*. 2019, Routledge.

Davies, Paul Fisher. *Comics as Communication: A Functional Approach*. 2019, Palgrave

Hammond, Kay and Katherine Danaher. "The value of targeted comic book readers". *ELT Journal*, Vol. 66, Issue 2, April 2012, pp. 193–204,

Khan, Sabba. *Talk at LDComics meeting*, Cartoon Museum, London, 13/02/20

Lim, C.J., and Ed Liu. *smartcities, resilient landscapes + eco-warriors*. 2019, Routledge

Lim, C.J. "Phone interview with Alex Fitch", broadcast as part of *Architecture Culture: Charles Dickens and EcoCities*, 15/04/20, Resonance 104.4 FM (London)

Tutsch, Susanne. "Bin toGather". *Erect Architecture website*. Accessed 25/06/20

Tutsch, Susanne. *Talk at University of Brighton*, 20/02/2020

Wright, Bradford W., *Comic Book Nation: The Transformation of Youth Culture in America*. 2003, JHU Press